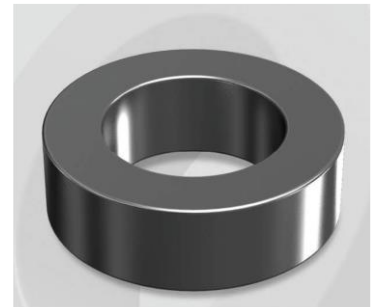


CS270075G18

Electrical Characteristics

Material	Permeability (μ)	AL \pm 8% (nH/N ²)	DCB (% min) @ 40 Oe	Coreloss (mW/cm ² , max) @ 50kHz, 1000G
SENDUST	75	151	64.4	320

OD : 270



Core Dimensions

Dimensions		Uncoated		Coated		Color	Packaging
		(mm)	(inch)	(mm)	(inch)		
OD	(Max)	26.92	1.060	27.70	1.091	Black	Box Qty = 252 pcs
ID	(min)	14.73	0.580	14.10	0.555		
HT	(max)	18.00	0.709	19.00	0.748		

Physical Characteristics

Cross Section (A)	Path Length (l)	Window Area (Wa)	Volume (V)	Breakdown Voltage (Vac)
1.052 cm ²	6.35 cm	1.56 cm ²	6.680 cm ³	1,000
0.163 in ²	2.500 in	307,874 cmil	0.4076 in ³	

Winding Information

0% Winding length/turn (cm)		
5.16		
40% winding factor Surface Area (cm ²)		
43.31		
40% Wound Di.(mm)		
OD	ID	HT
31.16	9.23	23.17

Typical DC Bias Performance

